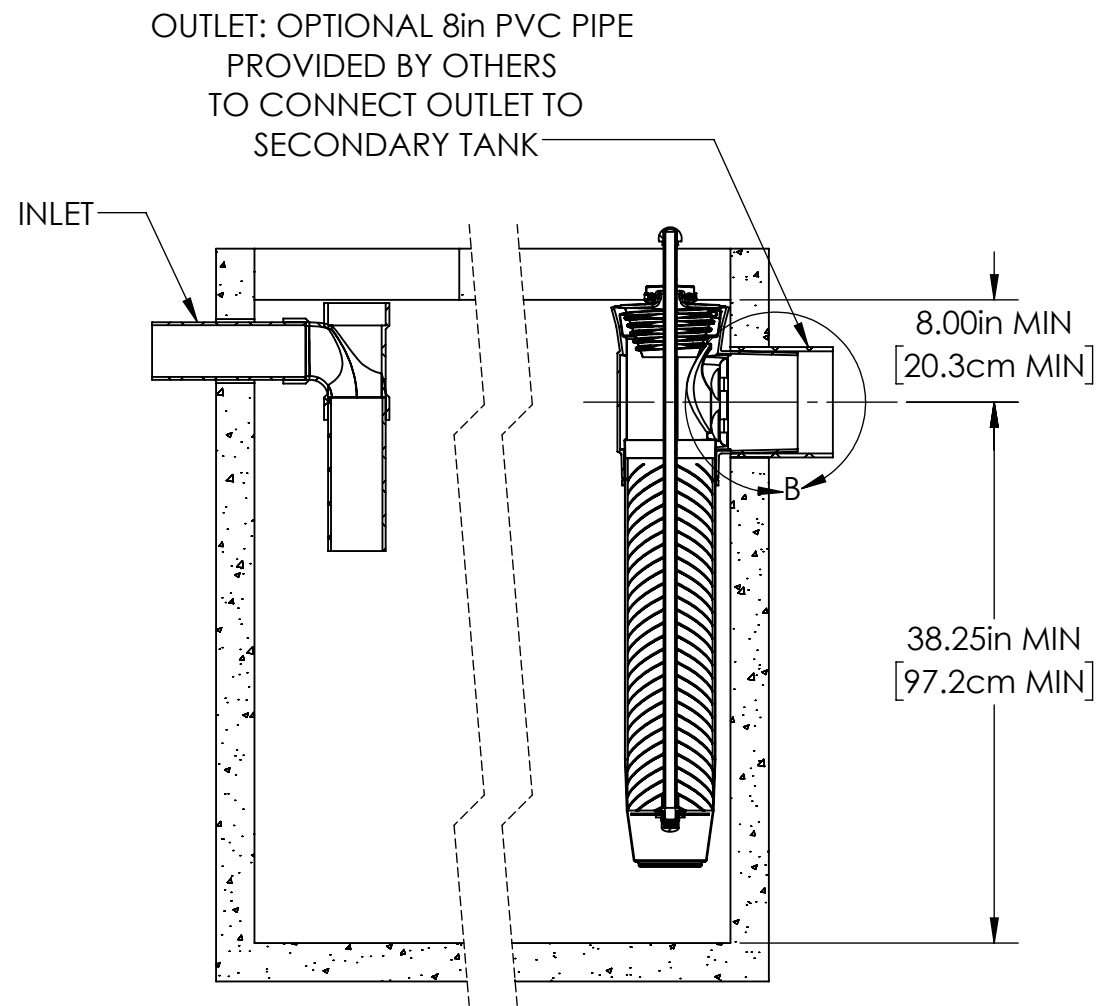
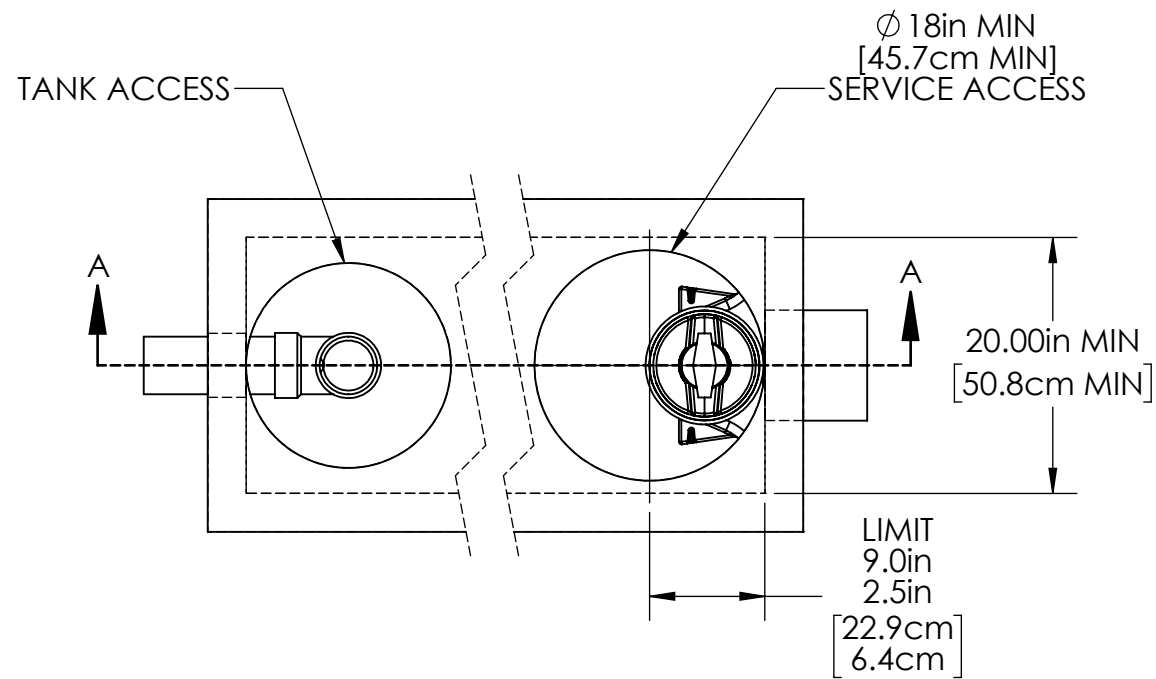
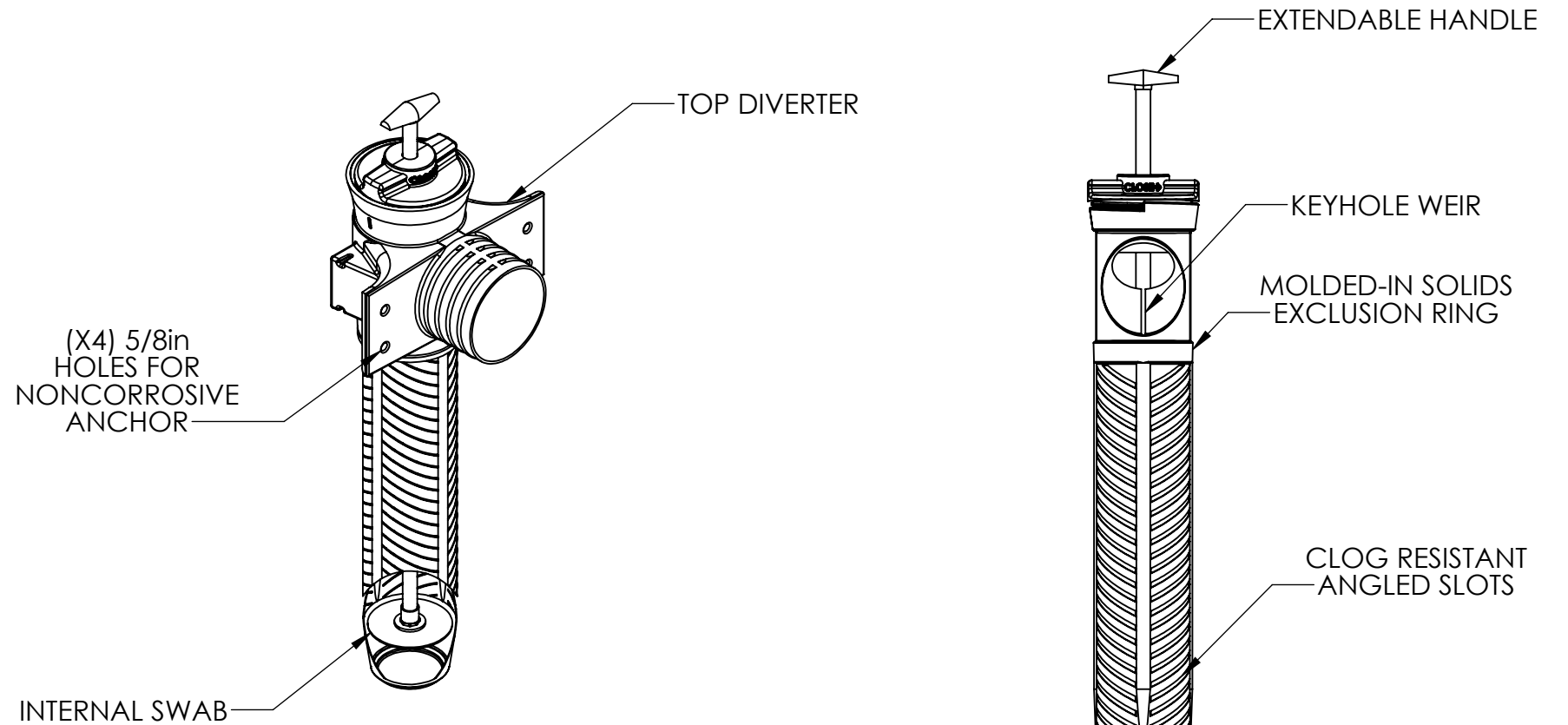


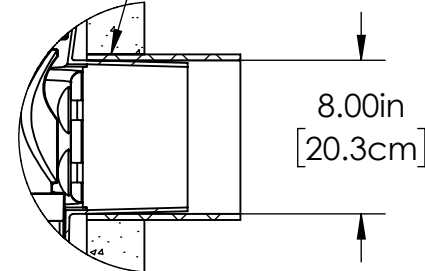
REVISIONS			
REV.	DESCRIPTION	DATE	REV BY
A	INITIAL RELEASE	6/17/2014	CTC
B	UPDATED TO CURRENT STANDARDS	4/27/2021	DFB



SECTION A-A
SCALE 1 : 15



IF INSTALLED AS SHOWN IN A SINGLE COMPARTMENT TANK THE 8in PVC PIPE MUST BE WATER TIGHT WITHIN THE TANK AND FLUSH AGAINST THE INSIDE TO MOUNT 8in SANITEE TOP DIVERTER



DETAIL B
SCALE 1 : 10

NOTES:

1. SNT 818-B is a 1/8in [3.2 mm] EFFLUENT SCREEN CAPABLE OF SCREENING UP TO 3,000 GPD [11 CUBIC METERS PER DAY].
2. SNT 818 IS A 1/8in [3.2 MM] EFFLUENT SCREEN CAPABLE OF SCREENING UP TO 6,000 GPD [23 CUBIC METERS PER DAY].
3. SNT 838 IS A 3/8in [9.5 MM] EFFLUENT SCREEN CAPABLE OF SCREENING UP TO 10,000 GPD [38 CUBIC METERS PER DAY].
4. OUTLET PIPE NOT INCLUDED.
5. ALL APPURTENANCES TO SANITEE® (E.G. SEPTIC TANK, ACCESS RISERS, ETC) MUST CONFORM TO ALL APPLICABLE CODES.

PROPRIETARY AND CONFIDENTIAL THE INFORMATION CONTAINED IN THIS DRAWING IS THE SOLE PROPERTY OF BIO-MICROBICS, INC.. ANY REPRODUCTION IN PART OR AS A WHOLE WITHOUT THE WRITTEN PERMISSION OF BIO-MICROBICS, INC. IS PROHIBITED.	UNLESS OTHERWISE SPECIFIED DIMENSIONS ARE IN INCHES AND TOLERANCES ARE AS FOLLOWS $X^{\circ} \pm 1^{\circ}$ $.X \pm .50$ $.XX \pm .25$		
	DO NOT SCALE DRAWING	DRAWN BY: DFB	DESCRIPTION 8in SaniTEE®
SHEET 1 OF 1	DATE: 4/27/2021	PART NUMBER SaniTEE® 818-B, 818, & 838	
SCALE: N/A	SIZE: B	APPROVED BY: MSH	REV B
		APPROVED BY DATE: 4/27/2021	